

TRANSFORMER LOGISTICS



PREMIER Roadlines Ltd.[®]
We serve excellence

INTRODUCTION

PREMIER ROADLINES LIMITED (PRL) – POWERING INDIA'S HEAVY LOGISTICS

With over four decades of industry excellence, Premier Roadlines Limited (PRL) stands as a trusted name in specialized logistics, particularly in the transformer and heavy cargo movement sector. As a National Stock Exchange listed company with a market capitalization of ₹300+ Crores, PRL has built its reputation on reliability, precision, and performance.

Our Core Strengths

- 4 Decades Of Experience
- 300 CR+ Market Cap
- Listed on the National Stock Exchange
- Owned Fleet of Volvo Pullers, Goldhofer and TII axles
- 45+ Branches Self owned and operated
- 97% on-time placements
- More than 1000+ Transformer movements completed
- Latest IT infrastructure
- 300+ professional Menpower

Expertise in Transformer Logistics

PRL is a recognized leader in transporting heavy electrical equipment, particularly power and distribution transformers ranging from 50 MVA to 500 MVA, successfully handling approximately 33,000 freight tons of transformer movements in the past year.

Our Transformer Sector Capabilities Include:

- Specialized experience in transporting oversized and over-dimensional transformers for major power projects.
- Expertise in door-to-door deliveries, including first-mile loading, secured lashing, and last-mile offloading.
- Routes and terrain surveyed in advance using Route Feasibility & Risk Assessment Tools.
- Full compliance with CEA guidelines and Electricity Board regulations.
- Strong working relationships with leading transformer manufacturers, EPCs, and state electricity boards.
- Proven track record with PSUs, Renewable Energy Firms, Power Grid Projects and Private Utilities.

OUR MAJOR CLIENTS & TRUSTED PARTNERS

(Serving the Transformer Industry with Excellence)

SIEMENS

TOSHIBA

 **GE VERNOVA**


MEIDEN

 **Hitachi Energy**

INDO TECH
INDO TECH TRANSFORMERS LIMITED
A Subsidiary of Shirdi Sai Electricals Limited

Schneider
Electric

बी एच ई एल
BHEL


ATLANTA

 **transformers &
rectifiers (India) Ltd**

 **TMC**
INDIA
POWER TO CREATE

 **SHILCHAR**
TECHNOLOGIES LIMITED

hammond
POWER SOLUTIONS 

SSE[®] 30+
Years
SHIRDI SAI ELECTRICALS LTD

 **CG Power and
Industrial Solutions Ltd.**

Transportation of Transformers and Reactors

(By M/s Premier Roadlines Limited)

500 MVA Transformer From Ahmedabad - 380001 To Bidar Kanataka 585401.

Size 36.58x16.24x14.76 Ft. Weight 250 MT



250 MVA Transformer From Ahmedabad - 380001 To Ramagundam, Telangana 505208.

Size 30.18x14.5x15.41 Ft. Weight 205 MT



From Kancheepuram Tamil Nadu To Bikaner (R.J) Size-26.90x12.13x14.76 Ft. Weight-135 MT



Transportation of Transformers and Reactors

(By M/s Premier Roadlines Limited)

From Ahemdabad To Raebareli Size of 35x15.4x13Ft. Weight-135 MT



From Pune To Kanchipuram Size -39x22x22.5 Weight-89 MT



From Vadodara (GJ) to Puruliya (WB) Size-22.7x12.5x16.9 Ft. Weight-122 MT With Drop Deck



Transportation of Transformers and Reactors

(By M/s Premier Roadlines Limited)

From Naidupeta (A.P) To Jaisalmer (R.J) 345026 Size-40x11.48x18 Ft. Weight 100 MT



From Naidupeta (A.P) To Barmer (R.J) Size-27x12x15.10 Ft. Weight-138 MT



From Kanchipuram Tamil Nadu 631561 to Jamnagar Gujarat 361012 Size-27.6x12x15Ft. weight-108 MT



TRANSPORTATION OF TRANSFORMERS AND REACTORS

(By M/s Premier Roadlines Limited)

From Airoli , Navi Mumbai 400708 to Jadcherla Telangana 509302 Size - 49.21x12.79x15.38 Ft. Weight-105 MT



From Naidupeta (A.P)to Barmer Size-29.52x13.12x16 Ft. weight-138 MT



From Kanchipuram Tamil Nadu 631561 to Jamnagar Gujarat-361012 Size-29.5x11.18x17.4 Ft. weight-80 MT



KEY STEPS IN TRANSFORMER TRANSPORTATION

Premier Roadlines Limited (PRL) is a trusted partner for end-to-end logistics of power and distribution transformers.

Our unmatched expertise, specialized fleet, and dedicated team make us a preferred choice for transformer manufacturers, EPC contractors, power utilities, and government bodies.

1. Feasibility Study & Route Survey

Precision planning is the foundation of successful transformer movement.

- In-depth route inspection and technical analysis
- Assessment of road conditions, load-bearing capacity and obstructions
- Coordination for government permits, clearances and movement plans
- Identification of critical infrastructure and bridges en route



KEY STEPS IN TRANSFORMER TRANSPORTATION

2. Transformer Loading & Unloading – Pan India Operations

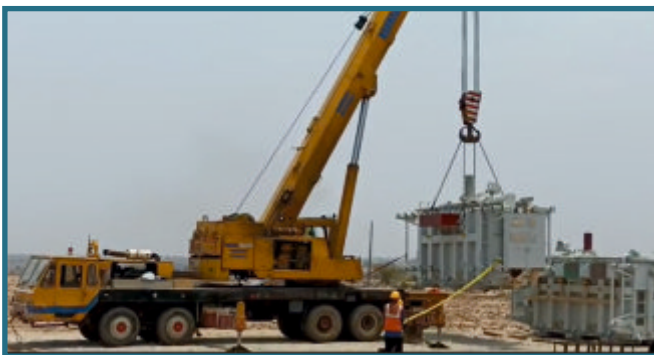
We specialize in safe and efficient unloading of transformers of all sizes across India.

- Small Size Transformers: Handled using normal cranes with trained operators.
- Medium Size Transformers: Require heavy-duty cranes, supported by proper stolling and jacking systems to ensure stability and safety.

Our team is equipped to manage complex transformer movements with precision:

- Crane deployment under expert supervision
- Trained and experienced manpower for handling ODC and heavy equipment
- Use of certified lashing materials, dunnage, and saddles to secure transformers during operations
- Close coordination with site engineers for smooth and timely handovers

With our expertise and nationwide reach, we ensure safe, timely, and professional execution of transformer-related jobs.



KEY STEPS IN TRANSFORMER TRANSPORTATION

3. Enroute Obstacles and Mitigation Plan

Expert planning and execution to overcome route-level obstructions for seamless transformer movement.

- Identification of stress zones and planning safe bypass routes.
- Detection of overhead hindrances like HT/LT lines, telecom cables, and signboards.
- Coordination with authorities for required clearances and approvals.
- Temporary removal or adjustment of obstacles using skilled clearance teams.
- Real-time on-ground supervision to manage enroute challenges.
- Ensuring uninterrupted and safe movement of oversized cargo.



4. Civil Work at Last Mile

Customized civil engineering solutions for complex site conditions.

- In-depth route inspection and technical analysis
- Assessment of road conditions, load-bearing capacity and obstructions
- Coordination for government permits, clearances and movement plans
- Identification of critical infrastructure and bridges enroute



TOUGH JOBS EXECUTED FOR TRANSFORMER MOVEMENT

Example - One

Job: 500 MVA Transformer Transportation

Route: Airoli (Maharashtra) - Goharganj Dist Raisen (M.P)

Project Scope: End-to-end movement of a 500 MVA transformer including last-mile handling and site offloading.

Objective & description:

Demonstrating our operational expertise in Over-Dimensional Cargo (ODC) logistics, we successfully executed the transportation of a 500 MVA transformer from Siemens Ltd., Airoli (Mumbai) to Paharganj. Our in-depth knowledge of site conditions and prior familiarity with the NRL Assam location enabled us to navigate complex logistical challenges efficiently, ensuring safe and timely project delivery.

Equipment Used with Detail:

To facilitate the safe and efficient transportation of the transformer, the following equipment was utilized:

- 18-Axle Lines (TII UHD 36-ton heavy-duty axles)
- 2 Volvo Pullers
- Jeep Escort Vehicle

Route Details:

The transportation route covered key transit points, as follows: Siemens Ltd. Airoli (Mumbai) - Padga - Kasara - Nashik - Dhule - Bhusawal - Amravati - Nagpur - Seoni - Lakhanadon - Rajmarag - Abdullah Ganj - Mandideep - 11 Miles - Bangrasia - Rojda Chak - Site

Team Deployed:

- AGM - Projects (30+ years of experience in handling transformers, reactors, and stators on Gurder bridges up to 400 tons)
- 2 Volvo-Trained Drivers
- 6 Trained Wiremen
- 1 Jeep Escort Personnel
- 4 Helpers

Challenges Overcome:

Kasara Ghat Terrain Constraints

- The steep and challenging terrain at Kasara Ghat necessitated the use of multiple pullers to ensure safe navigation.

Bangrasia Bridge Load Capacity Uncertainty

- Due to the unknown load-bearing capacity of Bangrasia Bridge in Madhya Pradesh, a bypass route was constructed to mitigate risks and ensure safe passage.

TOUGH JOBS EXECUTED FOR TRANSFORMER MOVEMENT

Example - One

Last Mile Navigation Challenges

- The final 4 kilometers before the site presented tight turns and space constraints, making it impossible to transport using an 18-axle line.
- To navigate these conditions, the load was transferred from 18-axle lines to 12-axle lines, facilitating a smoother and safer last-mile movement.

Conclusion:

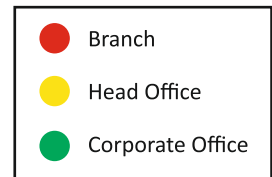
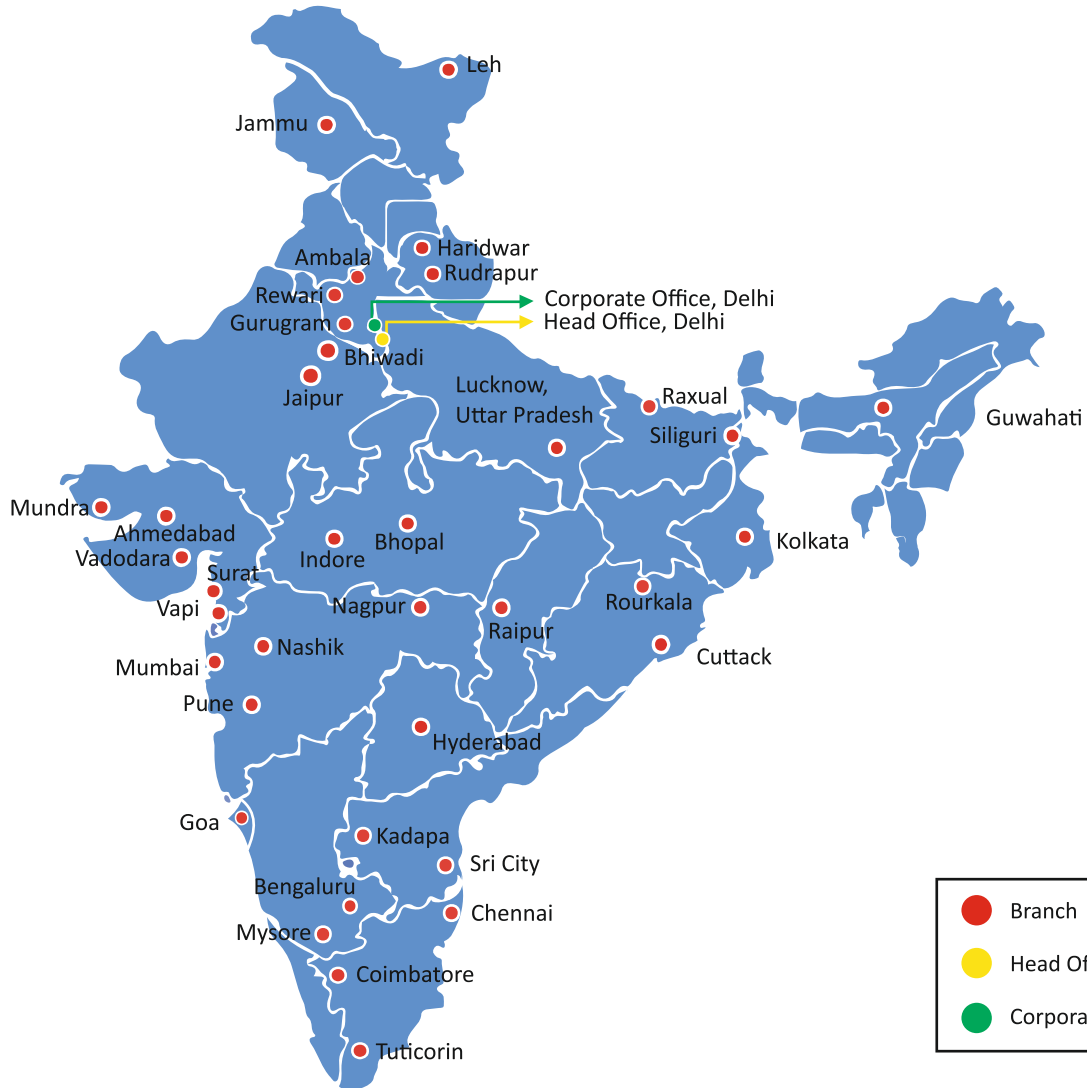
The ODC movement was executed successfully by adhering to standard protocols and implementing critical modifications. The use of two pullers enabled safe transportation through difficult terrains. The final stretch of 4-5 kilometers required road development, which was managed within the customer's scope. To ensure safety and efficiency, a route test was conducted with an escort team, and a bypass route was used instead of the Bangrasia Bridge. These strategic adjustments ensured the safe, timely, and efficient delivery of the 500 MVA.



MEDIA-TRANSFORMER MOVEMENT



OUR BRANCH NETWORK



OUR BRANCH NETWORK

📍 AHMEDABAD	📍 COIMBATORE	📍 HYDERABAD	📍 MAHESHWARAM	📍 ROURKALA
📍 ALWAR	📍 DELHI	📍 INDORE	📍 MUMBAI	📍 SILIGURI
📍 AMBALA	📍 DEWAS	📍 JAIPUR	📍 MUNDRA	📍 SONALI
📍 BENGALURU	📍 FARIDABAD	📍 JAMMU	📍 MYSORE	📍 SRIPERAMBADUR
📍 BHIWADI	📍 GOA	📍 JAMSHEDPUR	📍 NAGPUR	📍 SURAT
📍 BHOPAL	📍 GURUGRAM	📍 KOLKATA	📍 NASHIK	📍 SRI CITY
📍 BHUVNESHWAR	📍 GUWHATI	📍 KADAPA	📍 PUNE	📍 TUTICORIN
📍 CHAKAN	📍 HARIDWAR	📍 LEH	📍 RAIPUR	📍 TRICHY
📍 CHENNAI	📍 HOSUR	📍 LUCKNOW	📍 RAXUAL	📍 VADODARA
			📍 RUDRAPUR	📍 VAPI



PRL

Corporate Office

501 Tower A, Nextra “The Address”
Mayur Vihar Phase 1 Extn., Delhi-110091
Ph.: 011-44015002 | Email : corporate@prlindia.com
Mob.: +91-9958874603

Registered Head Office

PRL HOUSE : B-870,
New Ashok Nagar, Delhi - 110096
Ph.: 011-44015000 | Email : ho@prlindia.com
Toll Free Number 1800 571 3755

www.prlindia.com